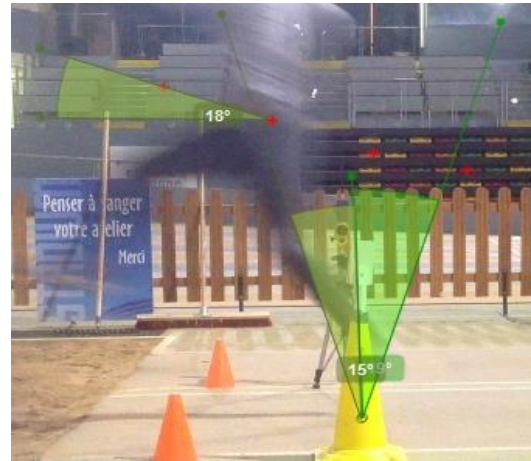
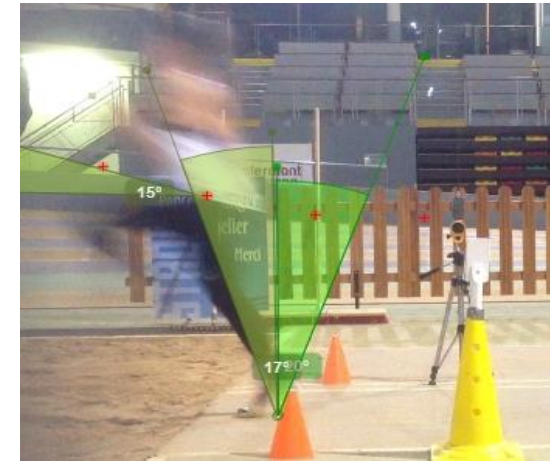




JENNA Vd:6.11m/s V(6-1):5.88m/s Va=6.08m/s



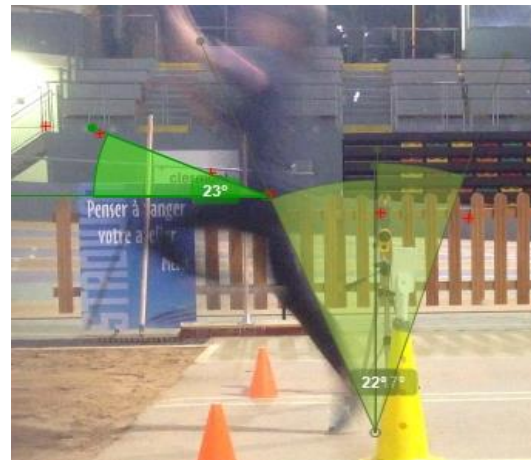
ELENORD Vd: 5.41 V (6-1) 5.88m Va=5.77m/s



MATHILDA Vd 6.26m/s V(6-1) :5.88m/s Va=5.97m/s



AXELLE Vd: 6.61m/s V(6-1):5.95m/s Va=6.7m/s



LOU Vd:6.96m/s V(6-1)=6.02m/s Va= 6.25m/s



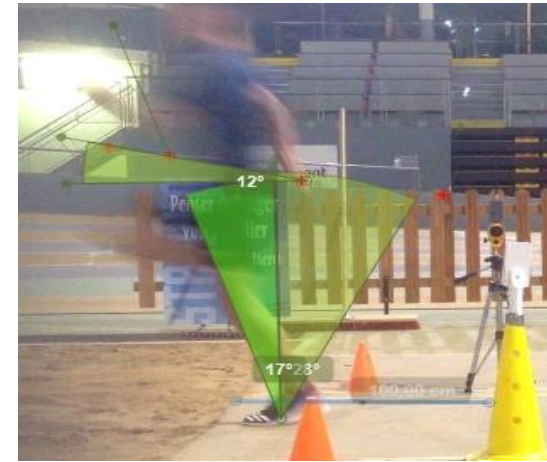
CHLOE Vd= 6.96m/s V(6-1)= 6.25m/s Va=6.25m/s



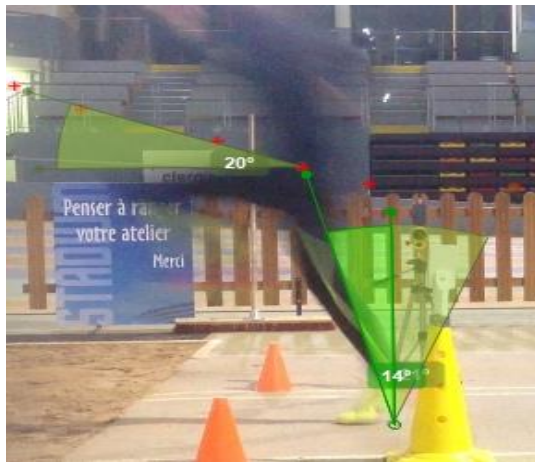
Perrine Vd=6.46m/s V(6-1)=5.68m/s Va=7m/s



NILS Vd=7.0m/s V(6-1)=7.25m/s Va=7.3m/s



REMI Vd= 6m/s V(6-1)=6.94m/s Va= 9.06m/s



THEO Vd=6.95m/s V(6-1)= 6.84m/s Va=8.5m/s



FILIPE Vd= 7.01m/s V(6-1)=6.57m/s Va=8.12m/s



TOM Vd=6.58m/s V(6-1)=6.66m/s Va=6.62m/s